

Published Manual Number/ECN: H14 0001/99461N

- Publishing System: TPAS
- Access date: 1/19/01
- Document ECN's: Exact

Kit Instruction— K14 0001

Please Read

About the Manual Identifying Information on the Cover

The front cover displays pertinent identifying information for this manual. Most important, are the published manual number (part number) /ECN (date code). Generally, when a replacement manual is furnished, it will have the same published manual number, but the latest available ECN. This provides the user with the latest information applicable to his machine. Similarly all documents comprising the manual will be the latest available as of the date the manual was printed, **even though older ECN dates for those documents may be listed in the table of contents.**

When communicating with the Milnor factory regarding this manual, please also provide the other identifying information shown on the cover, including the publishing system, access date, and whether the document ECN's are the latest available or exact.

References to Yellow Troubleshooting Pages

This manual may contain references to "yellow pages." Although the pages containing troubleshooting procedures are no longer printed on yellow paper, troubleshooting instructions, if any, will be contained in the easily located "Troubleshooting" chapter or section. See the table of contents.

Trademarks of Pellerin Milnor Corporation

The following, some of which may be used in this manual, are trademarks of Pellerin Milnor Corporation:

Ampsaver [®]	Dye-Extractor [®]	Gear Guardian [®]	Milnet [®]	Staph-Guard [®]
Autolint [®]	Dyextractor [®]	Hands-Off [®]	Milnor [®]	System 4 [®]
Auto-Purge [®]	E-P Express [®]	Hydro-Cushion [®]	Miltrac	System 7 [®]
Autovac	E-P OneTouch [®]	Mildata [®]	Miltron	Totaltrol [®]
CBW [®]	E-P Plus [®]			

Comments and Suggestions

Help us to improve this manual by sending your comments to:

Pellerin Milnor Corporation
Attn: Technical Publications
P. O. Box 400
Kenner, LA 70063-0400

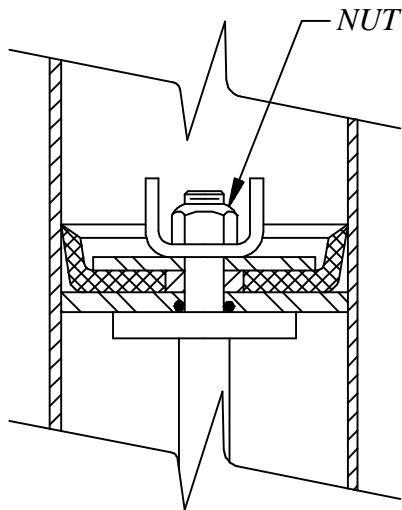
Fax: (504) 469-1849



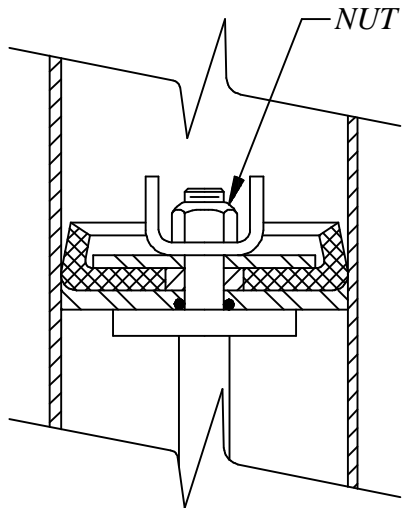
PISTON CUP AND WASHER INSTALLATION

BMP700051/84386V

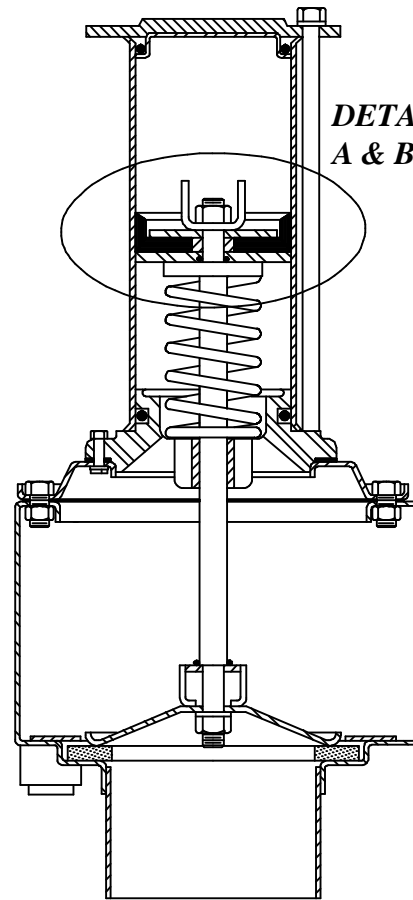
When installing new piston cups in MILNOR automatic dump valves, tighten nut until it is just barely possible to turn the piston cup and washer assembly on the valve. After tightening, the piston cup should appear as shown in Dump Valve Detail A.



**DUMP VALVE
DETAIL A**



**DUMP VALVE
DETAIL B**



DUMP VALVE

Tightening the nut too tight causes the piston cup to extrude to shape shown in Dump Valve Detail B and may cause piston to bind in cylinder.

Note: Nut is self-locking and does not need to be drawn fully tight to lock on to valve stem.